

BE ON THE LOOKOUT IN YOUR AREA

Invasive mosquitoes capable of transmitting diseases such as Zika virus, yellow fever, and dengue fever have been found in several areas throughout California. Help us protect public health by educating yourself on how to identify and eliminate areas that may produce these types of mosquitoes.

Maintain, manage or eliminate all types of standing water on a regular basis. Keep in mind that mosquitoes need very little water to complete their life cycle, so some areas may not be as obvious as others, like discarded bottle caps, empty cans, bottles, sprinkler heads, etc.

PROTECT YOURSELF FROM MOSQUITOES

- Report mosquito problems, especially if they are aggressive daytime biting mosquitoes.
- Drain and dump items holding water.
- Cover empty containers with lids or store indoors.
- Clean and scrub bird baths and pet bowls weekly.
- Dump out water in plant saucers or drill holes to allow drainage.
- Keep rain gutters debris free.
- Cover rain barrels with a tight-fitting mosquito-proof screen.
- The best way to protect yourself from mosquito-borne diseases is to avoid mosquito bites. When going outdoors, apply EPA registered insect repellents such as those containing DEET, picaridin, oil of lemon eucalyptus, and IR3535.
- Wear long sleeves and long pants.

COMMON MOSQUITO BREEDING SOURCES



Plant saucers



Buckets



Bird baths



Rain barrels



Septic tanks



Tires



Toys



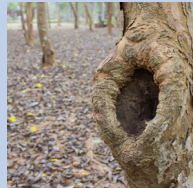
Pet bowls



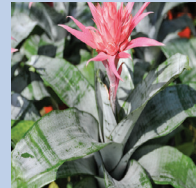
Wheelbarrows



Cemetery vases



Treeholes



Plant axils are where leaf meets stem

OUR MISSION

The Marin/Sonoma Mosquito and Vector Control District, founded in 1915, protects the health and welfare of the communities it serves from mosquitoes and vector-borne diseases by utilizing cost-effective, environmentally responsible integrated vector management practices.

OUR SERVICES

Our programs and services are funded through property taxes and benefit assessments and are provided at no additional cost to all residents of Marin and Sonoma counties.



Marin/Sonoma Mosquito & Vector Control District

595 Helman Lane

Cotati, CA 94931

Monday through Friday

7:00am to 3:30pm

707.285.2200

www.msosquito.org



INVASIVE MOSQUITO SPECIES OF CALIFORNIA



PROTECTING PUBLIC HEALTH SINCE 1915

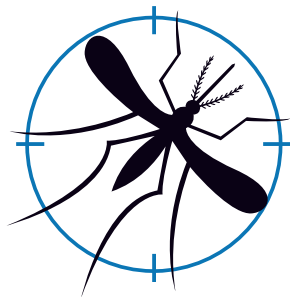
HELP US DETECT INVASIVE MOSQUITO SPECIES

Help us protect public health by learning how to identify invasive mosquito species. Early detection of these invasive mosquitoes will help us control them. We can't do this alone. We need your help.

Always report mosquito problems, especially aggressive daytime biting mosquitoes, to the Marin/Sonoma Mosquito and Vector Control District by calling us at 707.285.2200, or visit us online at www.msosquito.org

WHY THE CONCERN?

These two mosquito species, found in several areas of California, are capable of transmitting several diseases including dengue fever, chikungunya, yellow fever and Zika virus.



THE COMMON CHARACTERISTICS OF BOTH AEADES SPECIES

- These mosquitoes are aggressive daytime biters, both indoors and outdoors.
- They are approximately 1/8 – 1/4 of an inch in size.
- Their peak feeding times are during the early morning and late afternoon.
- They prefer biting people but also feed on other domestic animals, mostly mammals.
- The entire aquatic cycle (i.e. from egg to adult) can occur in as little as 7–9 days.
- They have a short flight range, so egg production sites are likely to be close to where the adult mosquitoes are found.
- Eggs are laid over a period of several days, are resistant to drying out, and can survive for six months or more. The eggs lay dormant through the winter until they are submerged in water and temperatures rise causing the larvae to hatch.
- Only the female mosquito bites to obtain a blood meal. The male mosquito feeds on plant juices.
- The life span for adult mosquitoes is around three weeks.



Aedes aegypti

Commonly referred to as the **yellow fever mosquito**, *Aedes aegypti* has a worldwide distribution in tropical and subtropical areas and has recently been found in different locations throughout California.

GENERAL INFORMATION

- *Aedes aegypti* is a small, dark mosquito with a white violin-shaped marking on its back and banded legs.
- *Aedes aegypti* has the ability to transmit Zika virus, dengue fever, chikungunya and yellow fever.



Photo by Jim Guthony



Actual Size: About 1/4 inch long

Aedes albopictus

Commonly referred to as the **Asian tiger mosquito**, *Aedes albopictus* is native to Asia but was recently re-introduced to Los Angeles County in 2011 and has spread throughout neighboring areas.

GENERAL INFORMATION

- *Aedes albopictus* is a small, dark mosquito with a white dorsal stripe and banded legs.
- *Aedes albopictus* has the ability to transmit Zika virus, dengue fever, chikungunya, yellow fever and dog heartworm.



Photo by Susan Ellis, Bugwood.org

